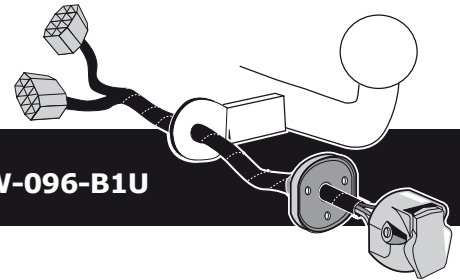


Volkswagen Passat Sedan	03/2005 >> 10/2010
Volkswagen Passat Sedan	11/2010 >> 10/2014
Volkswagen Passat Variant	08/2005 >> 10/2010
Volkswagen Passat Variant	11/2010 >> 10/2014
Volkswagen Passat Alltrack	02/2012 >> 10/2014
Volkswagen Passat CC	05/2008 >> 12/2011
Volkswagen CC	01/2012 >>

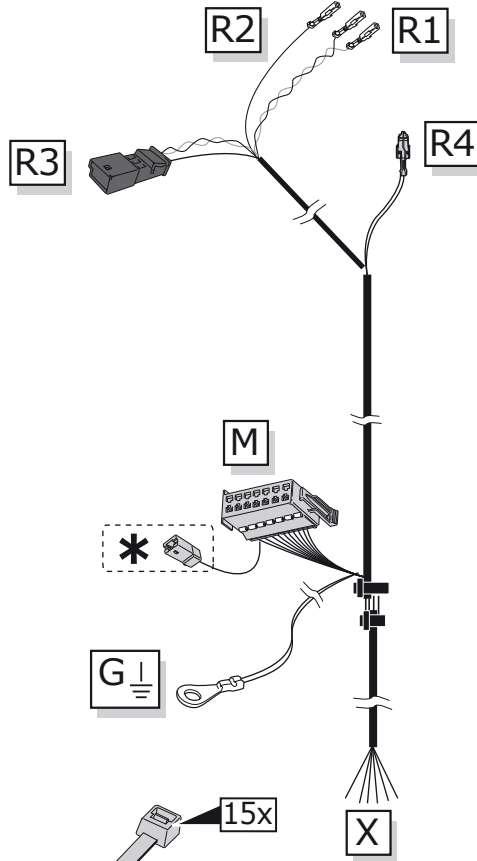
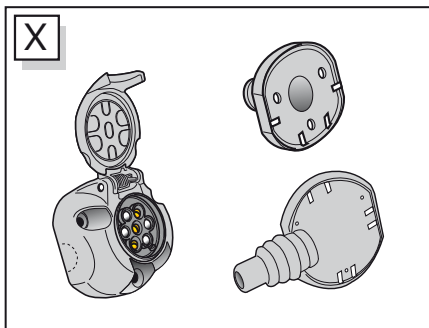
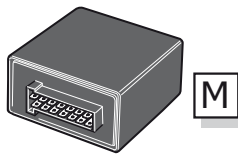
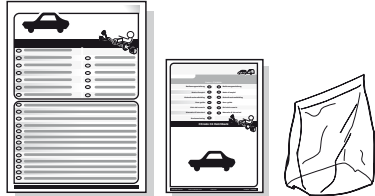
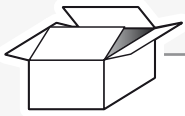


Partnr.: VW-096-B1U

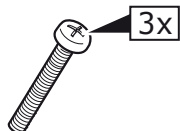
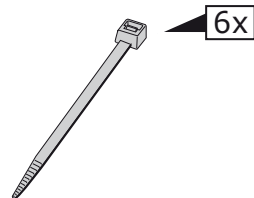
- Fitting instructions electric wiring kit tow bar with 12-N socket up to DIN/ISO Norm 1724.
- We would expressly point out that assembly not carried out properly by a competent installer will result in cancellation of any right to damage compensation, in particular those arising by virtue of the product liability act.
- Contents of these kits and their fitting manuals are subject to alteration without notice, please ensure that these instructions are read and fully understood before commencing installation.
- Do not overload circuits; the maximum loads per connection are detailed in this manual.
- Attention! Before Installation, please read this manual carefully and inform your customer to consult the vehicle owners manual to check for any vehicle modifications required before towing.
- In the event of functional problems, troubleshooting must be limited to about 0.5 hours, contact the technical support:
ukts@ecs-electronics.com / 07440 202 052.



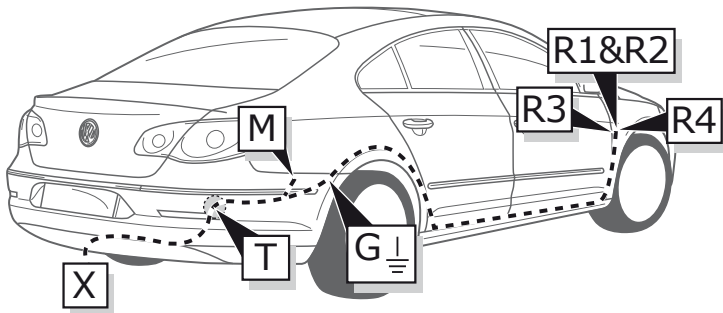
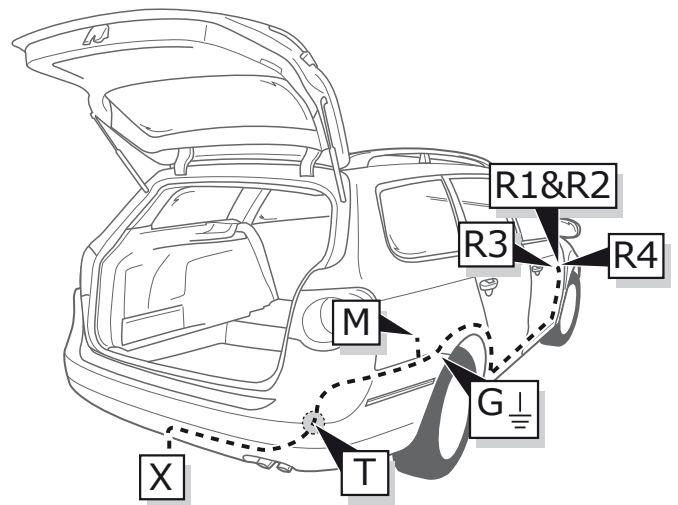
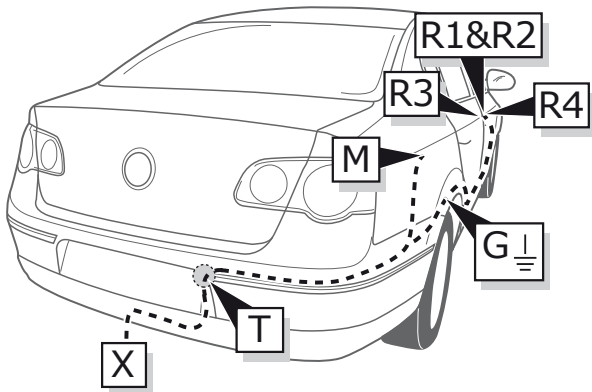
Part list



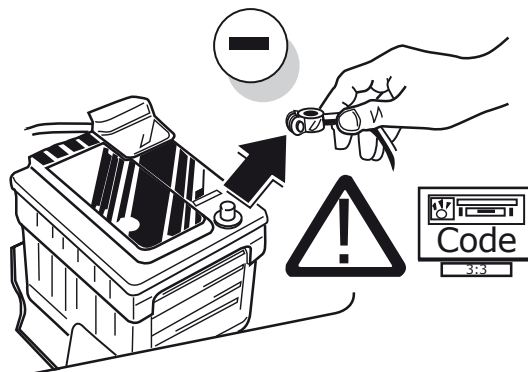
* Reverse signal preparation



ROUTING

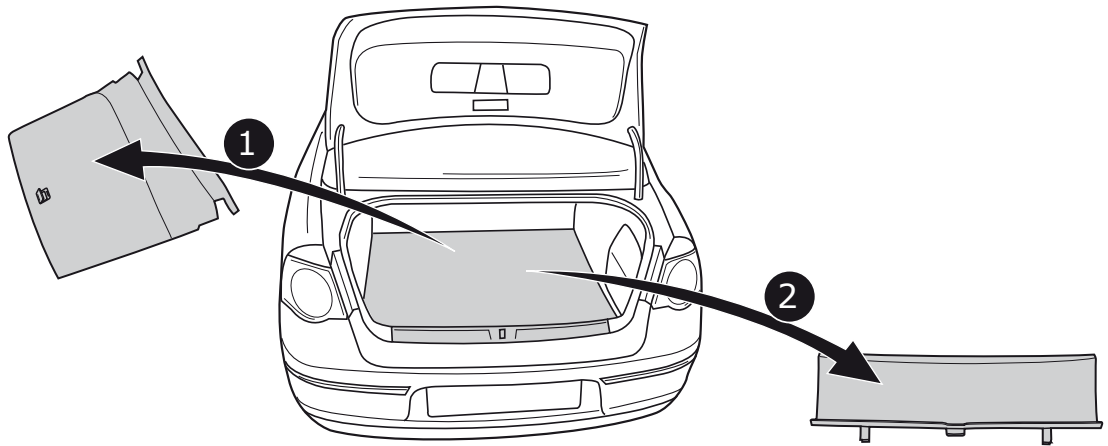


1



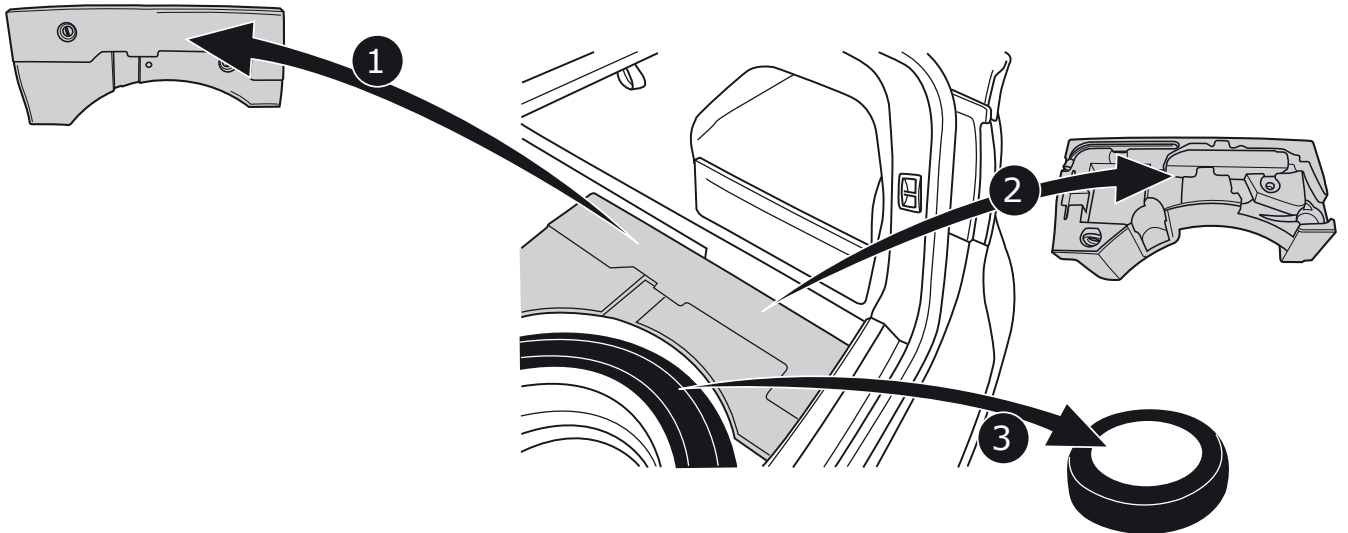
SEDAN 2005-2010 / CC

2

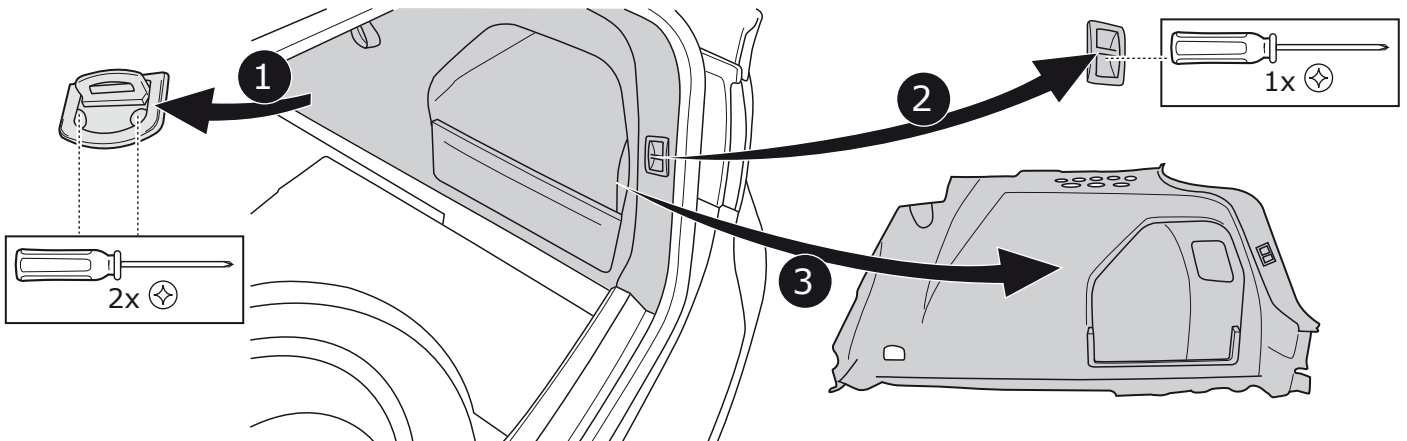


SEDAN 2005-2010

3

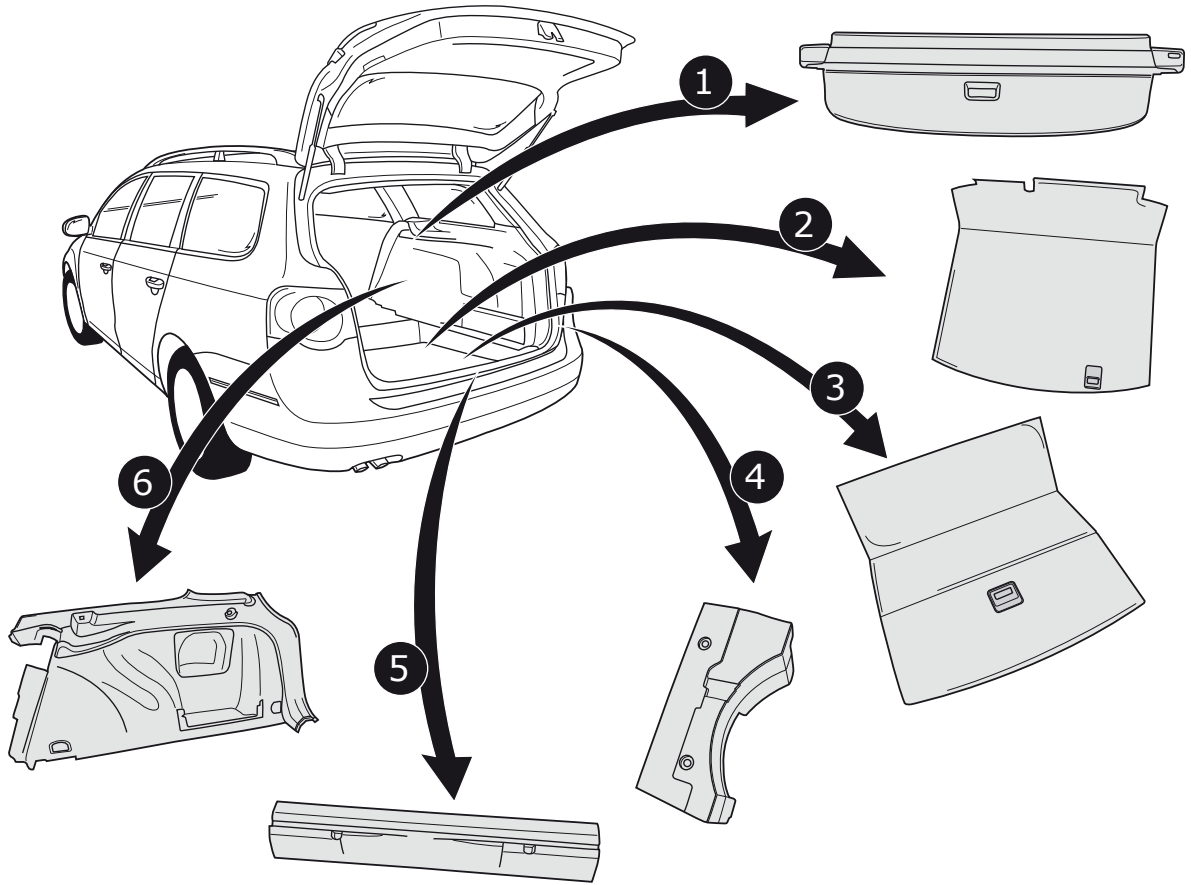


4



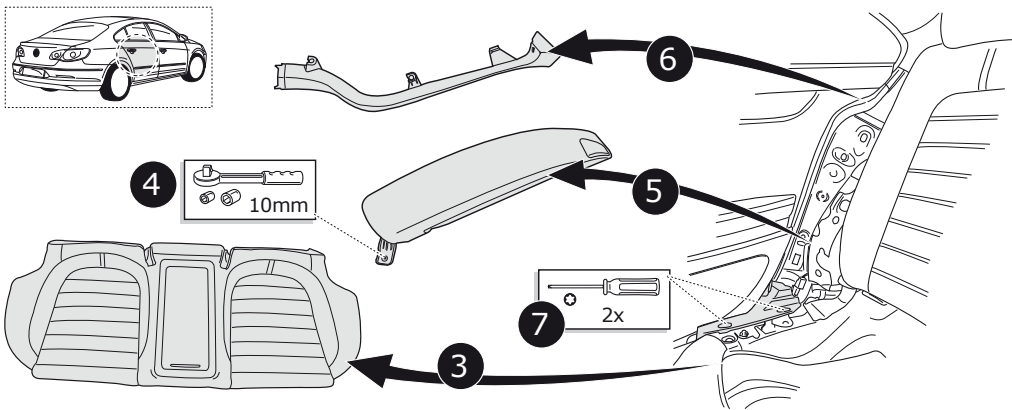
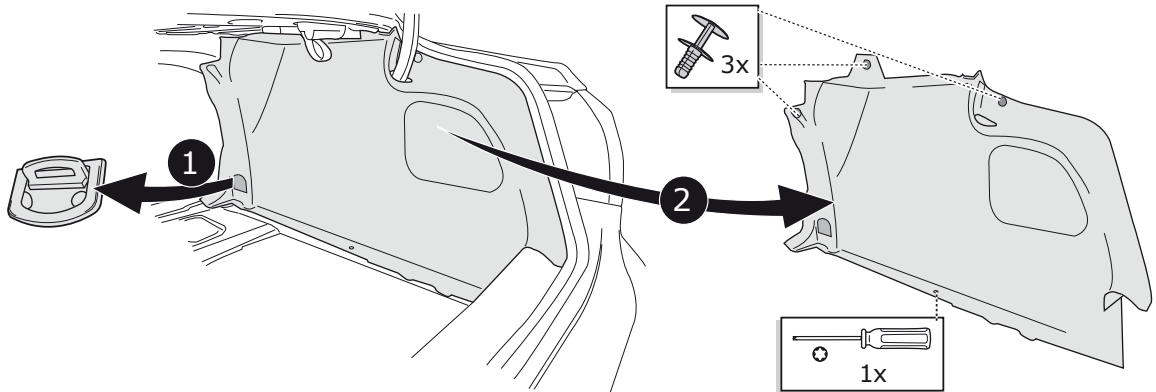
VARIANT

5



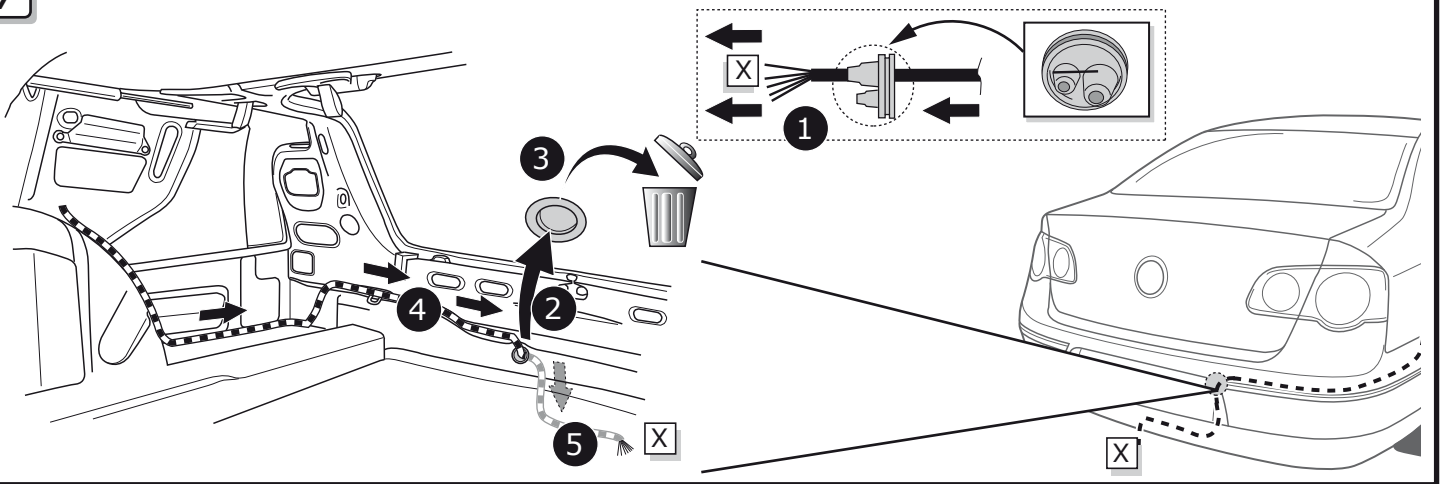
CC / SEDAN 2011-2012

6



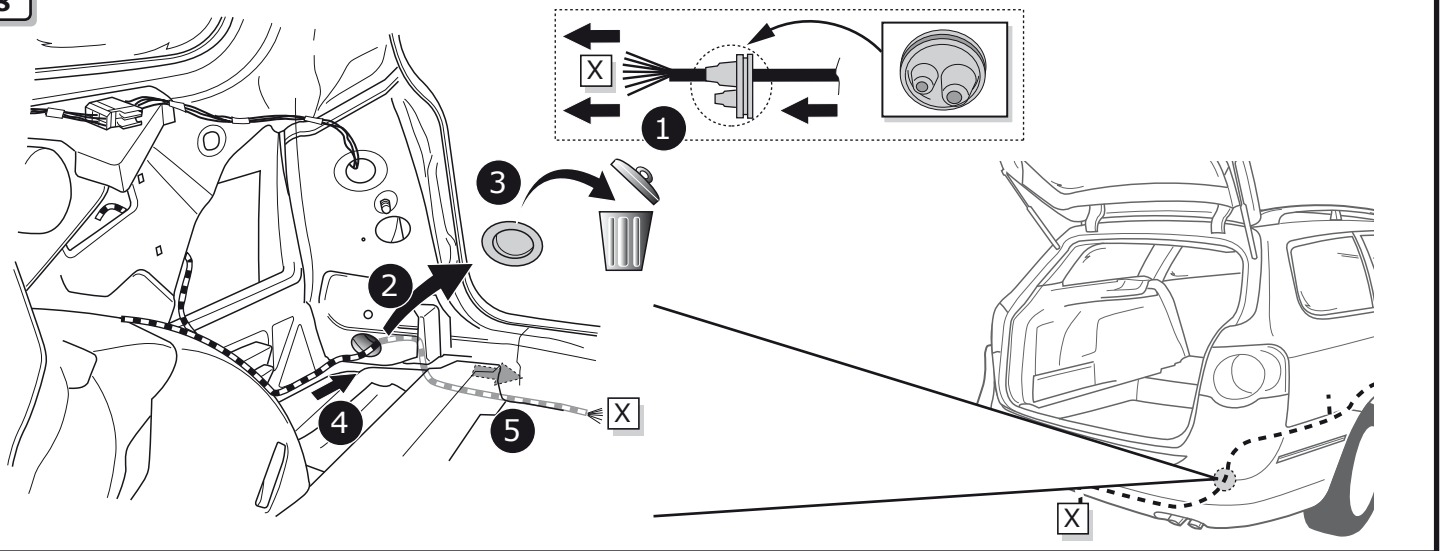
SEDAN

7



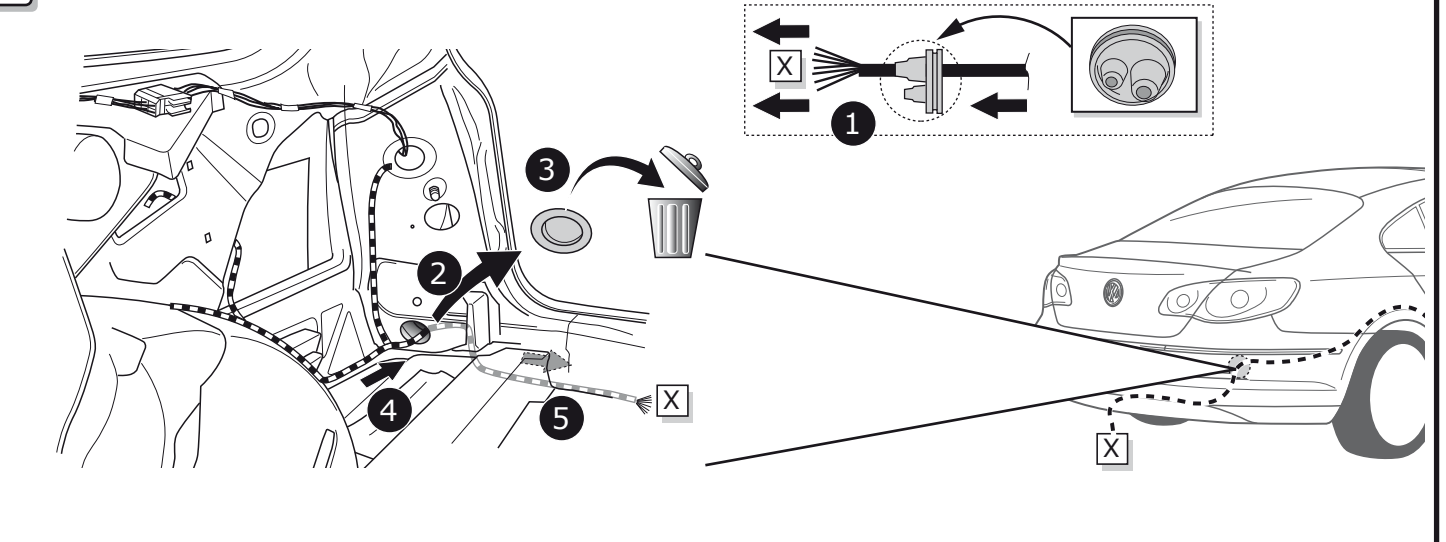
VARIANT

8



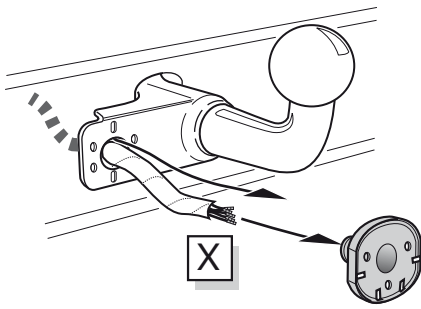
CC

9

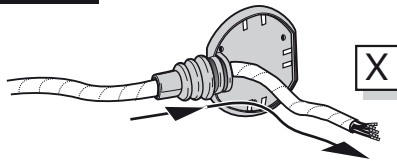


A

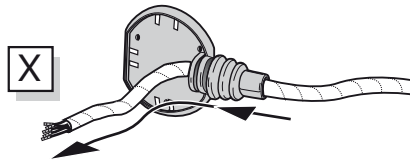
Option 1



Option 2



Option 3



INFO

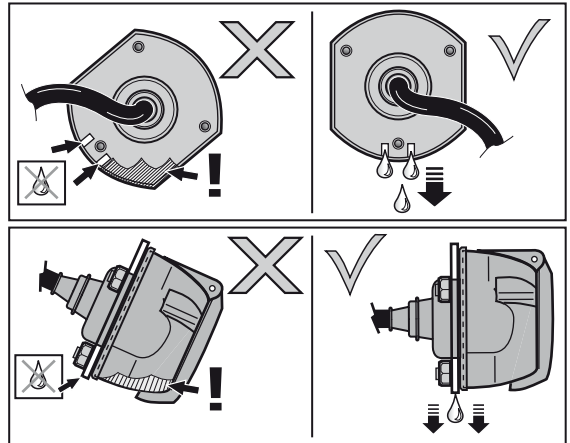
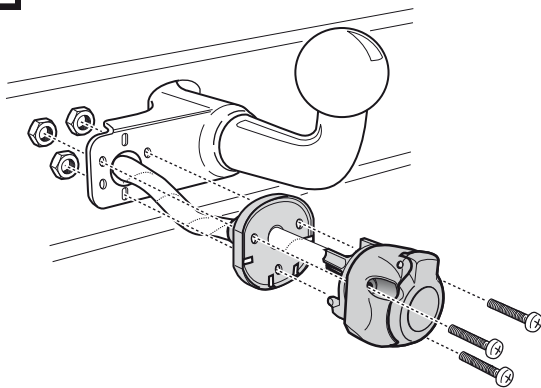
SOCKET CONNECTION



Pag. 15

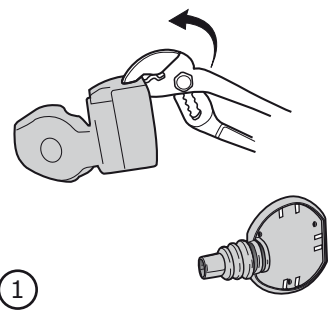
B

Option 1

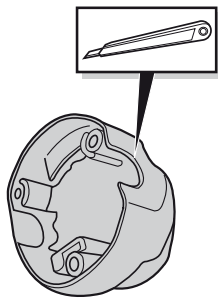


C

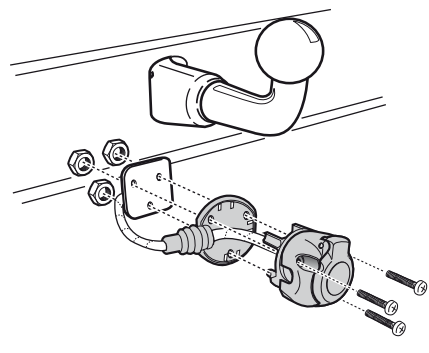
Option 2



①



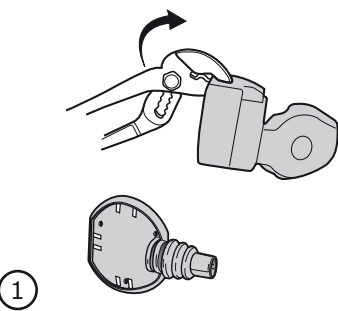
②



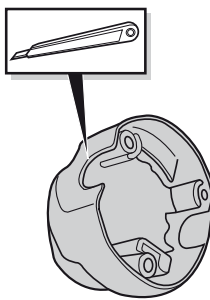
③

D

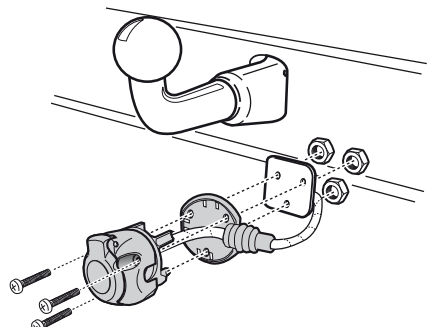
Option 3



①



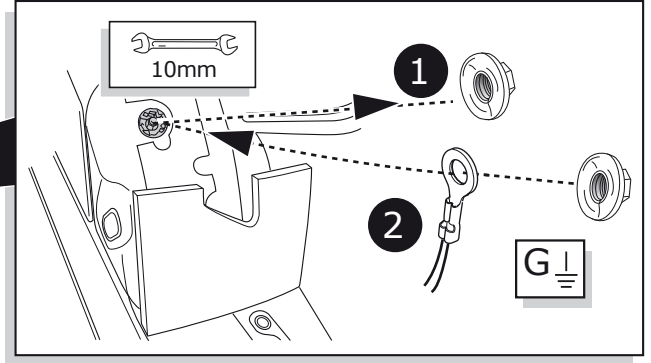
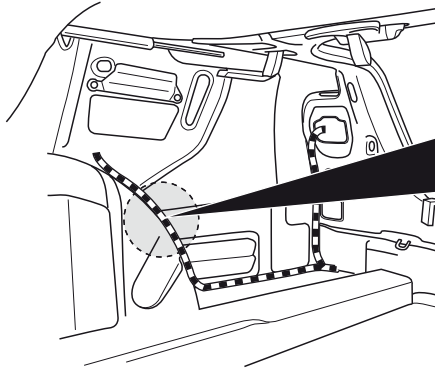
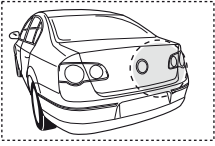
②



③

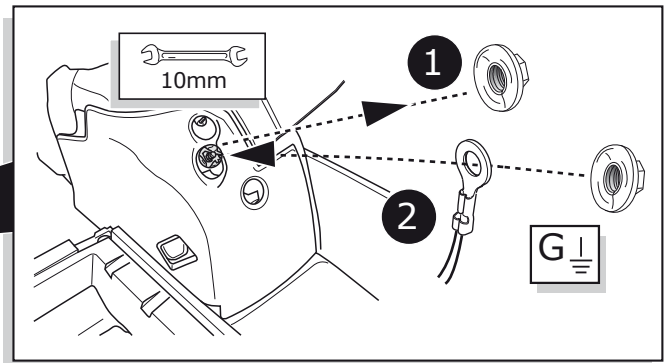
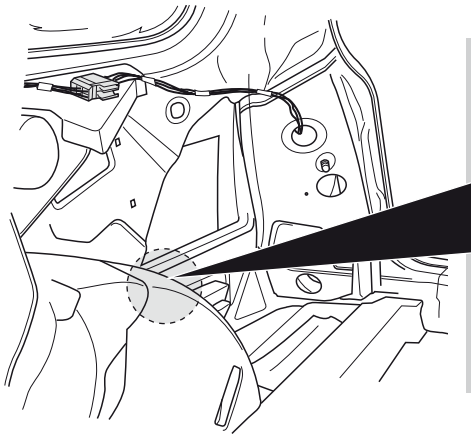
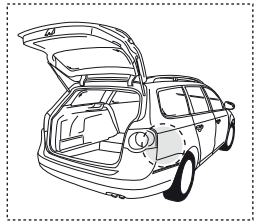
SEDAN 2005-2010 / CC

10



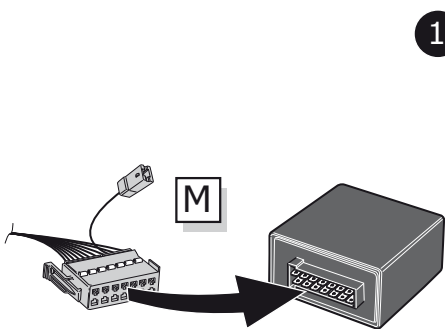
VARIANT / SEDAN 2011-2012

11

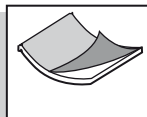


SEDAN / VARIANT / CC

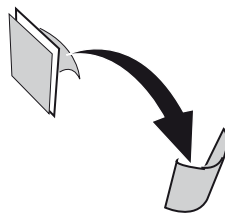
12



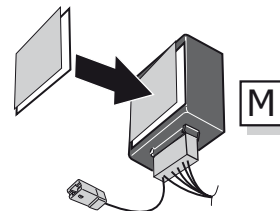
1



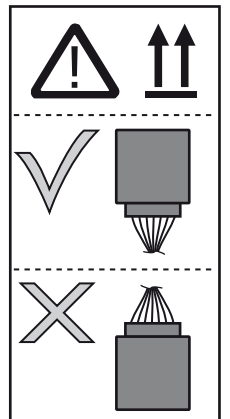
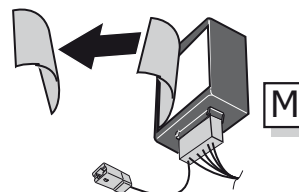
2



3

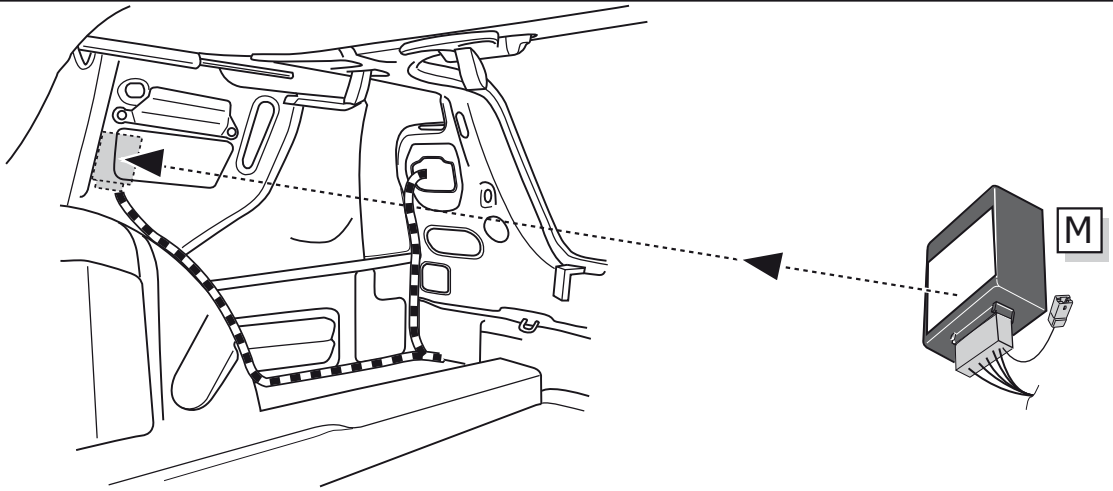
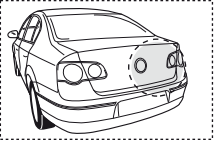


4



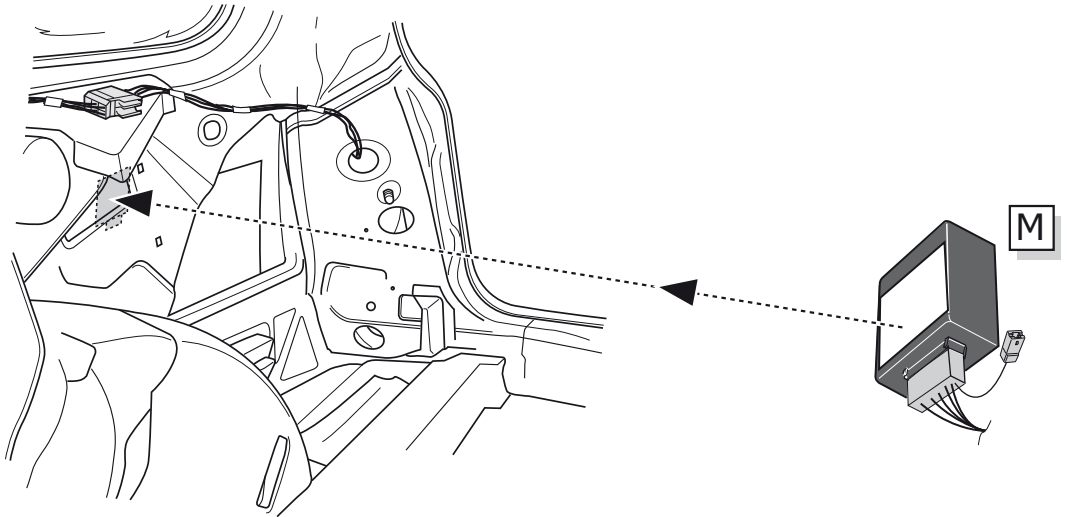
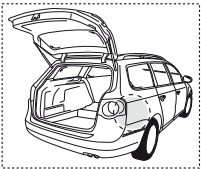
SEDAN / CC

13



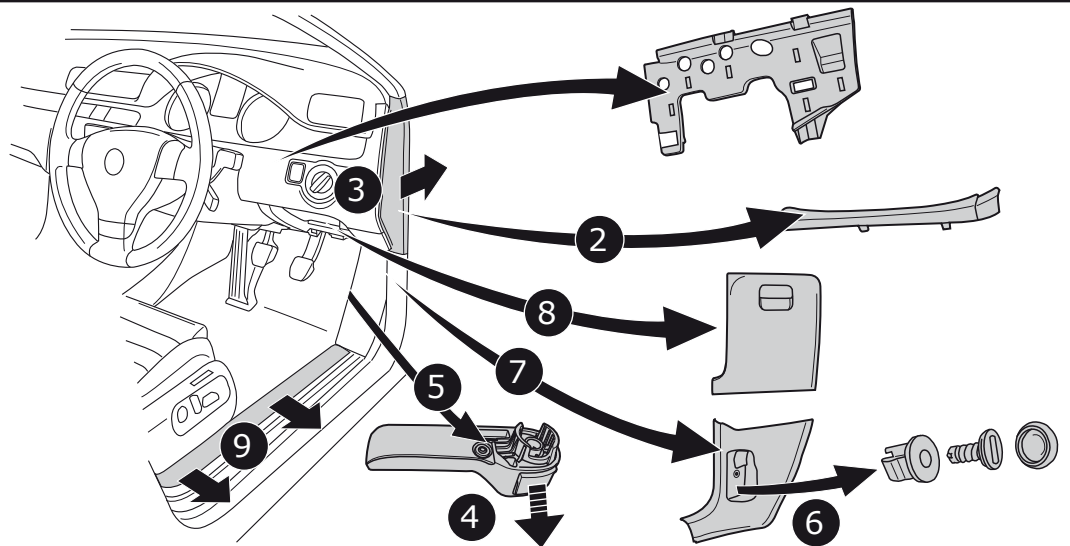
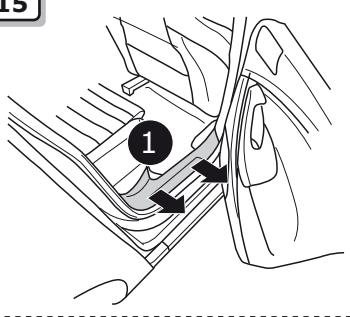
VARIANT

14

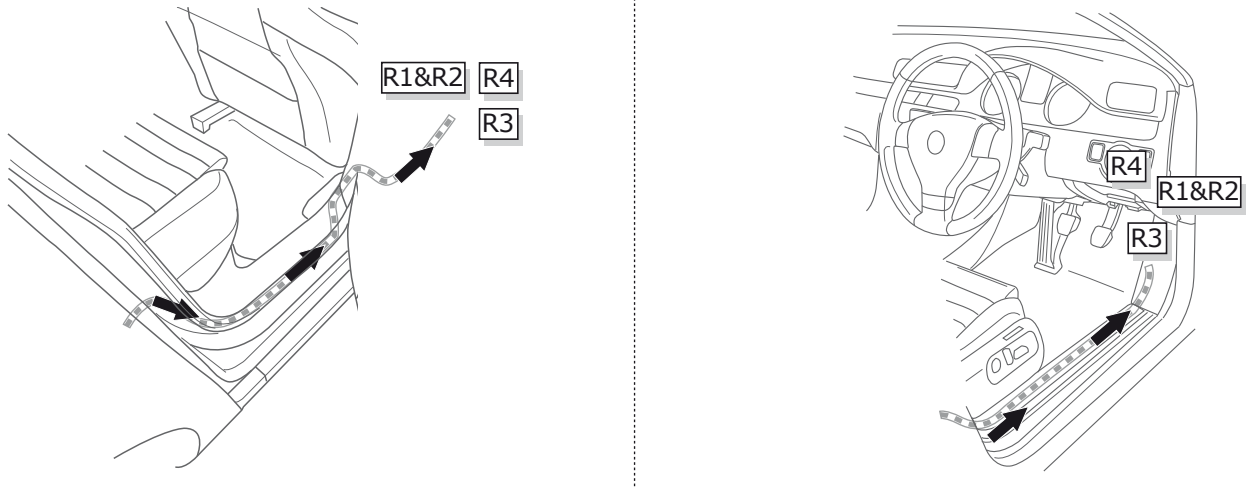


SEDAN / VARIANT / CC

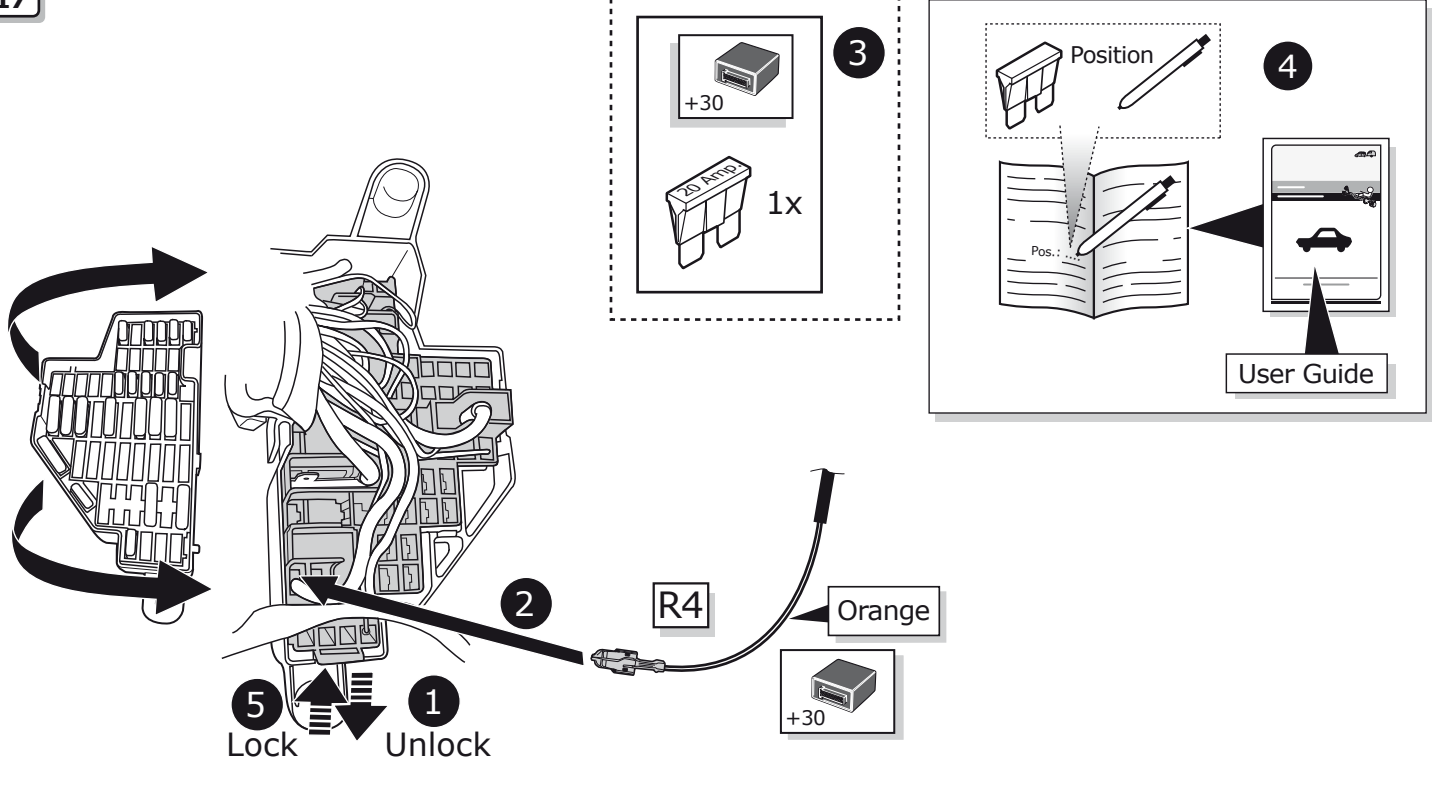
15



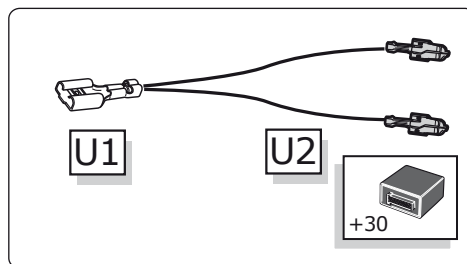
16



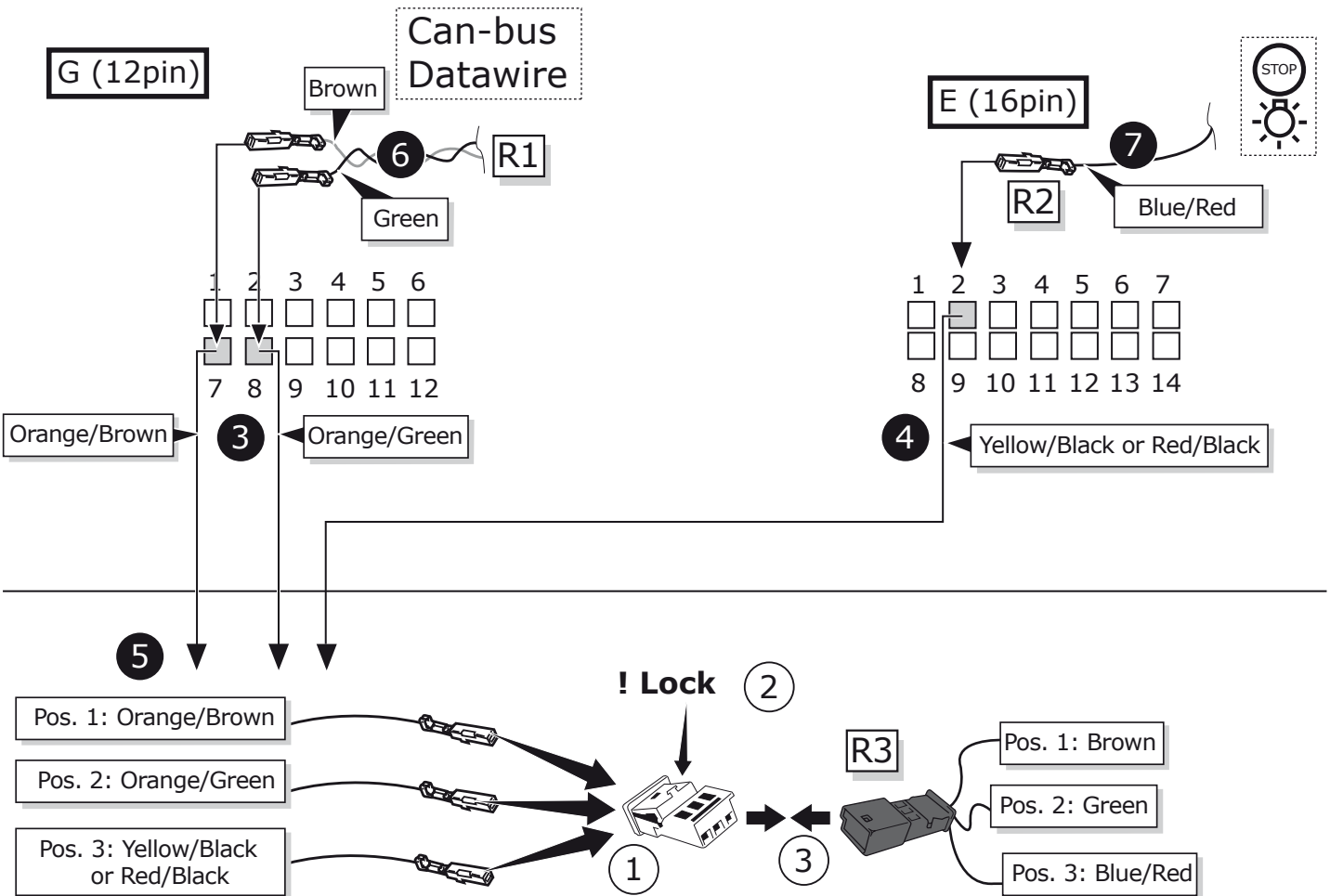
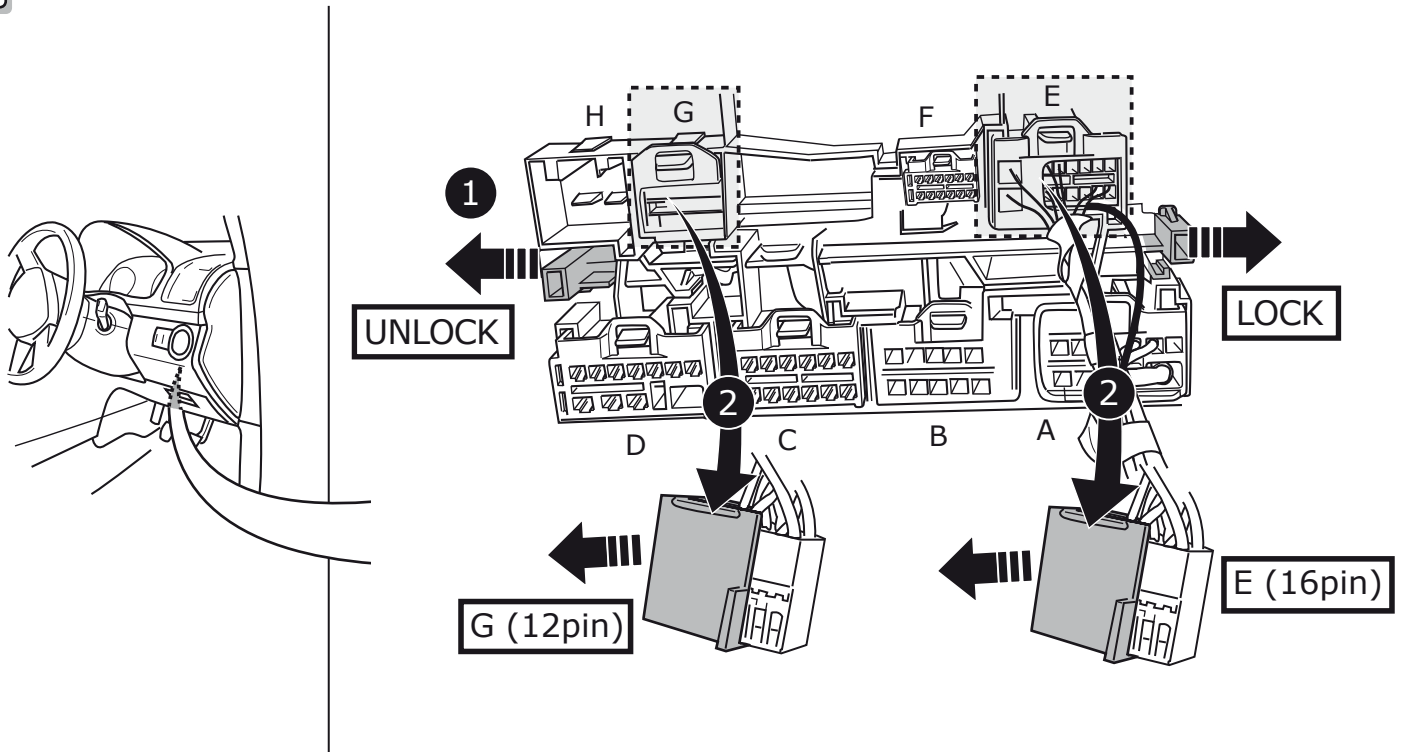
17



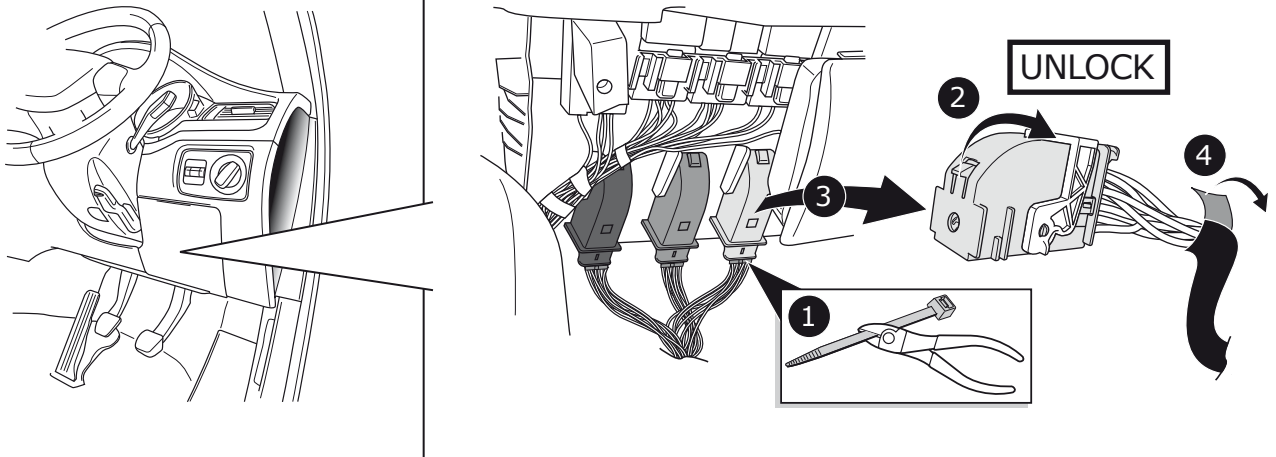
Use if there is no prepared +30 location:



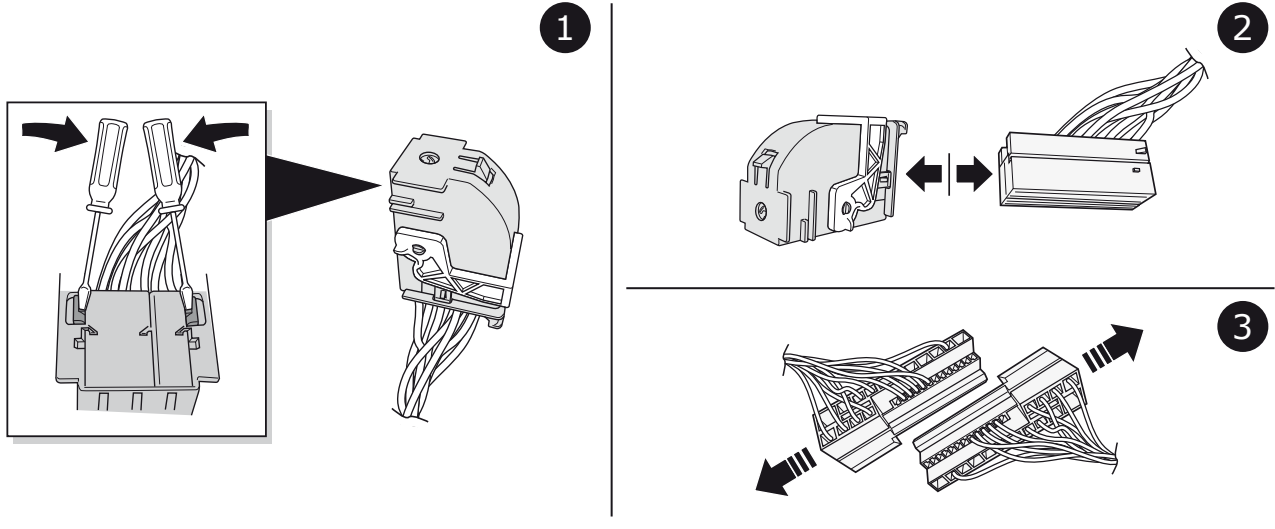
18



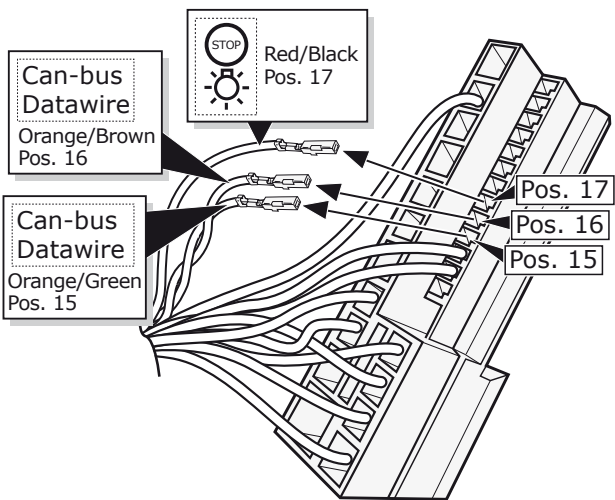
19



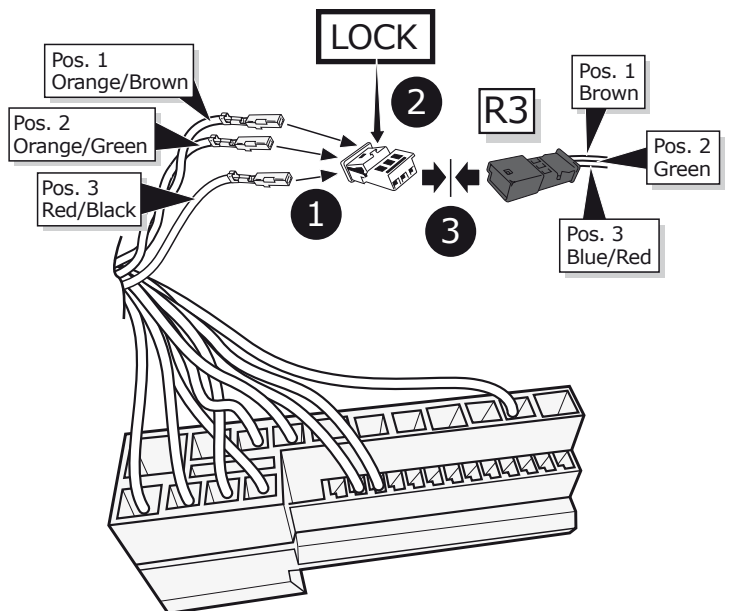
20



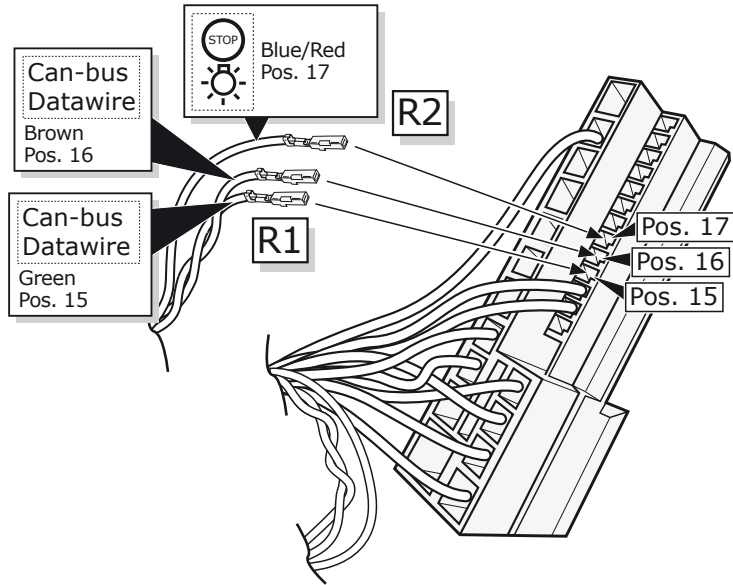
21



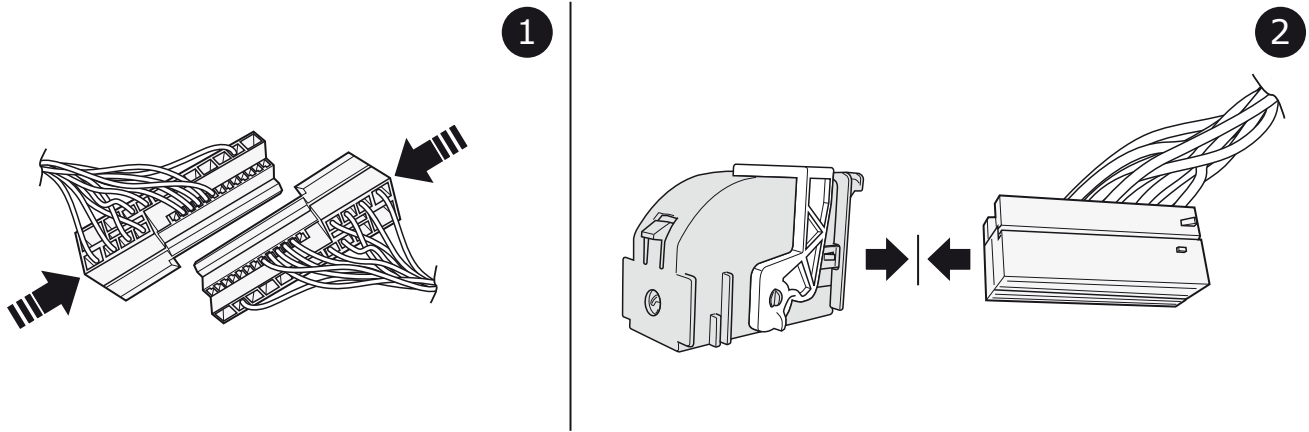
22



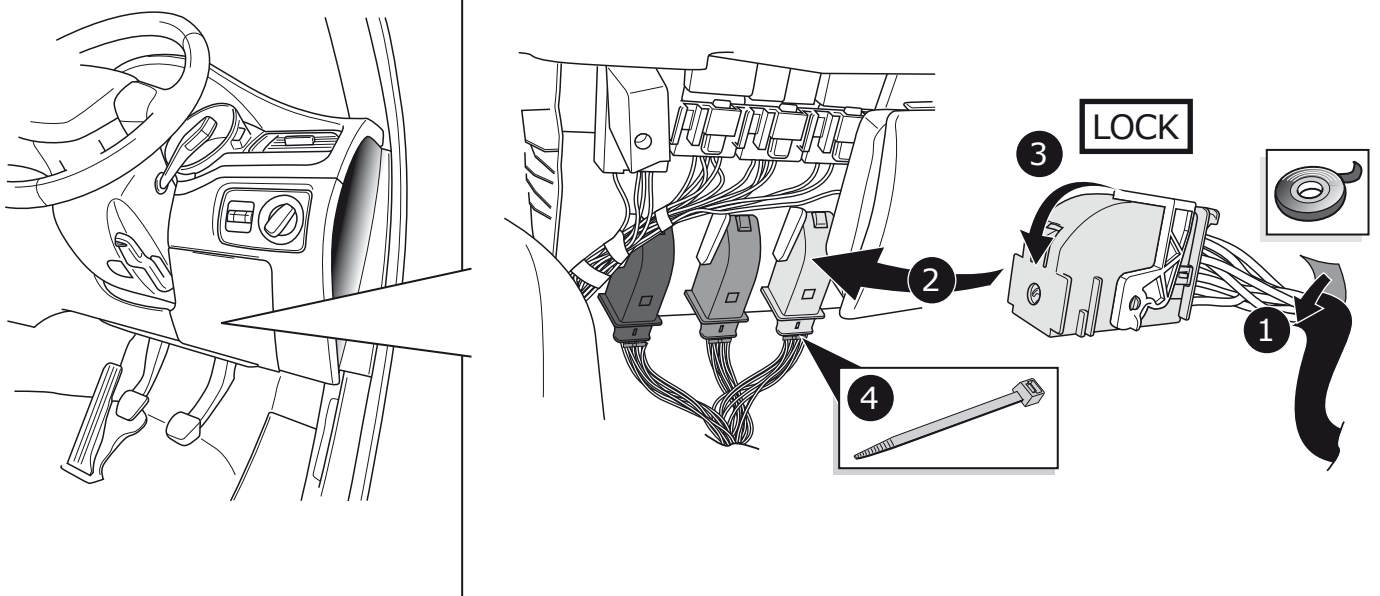
23



24



25

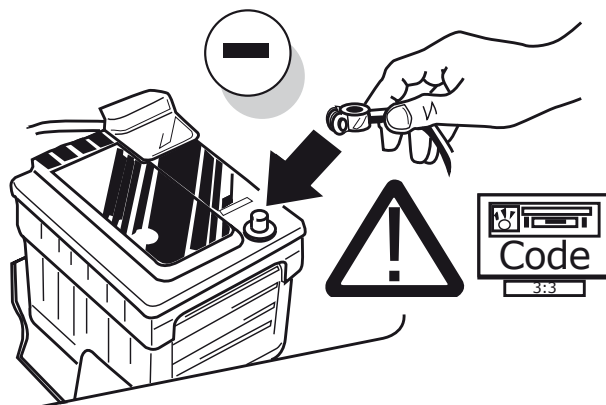


26



A VAG Service Tester must be used to code the vehicle's Gateway with the additional function for the towing hitch at the dealer.

27



28

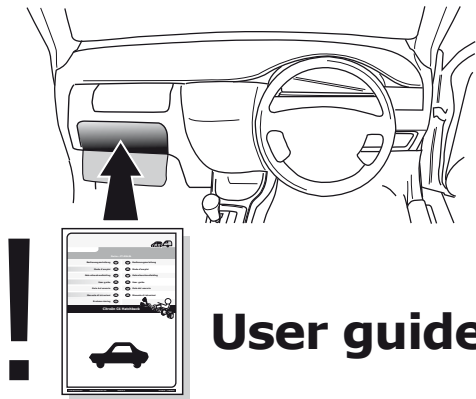


TEST ALL THE CIRCUITS WITH A TEST DEVICE WITH THE CORRECT POWER LOAD FOR EACH FUNCTION. A TEST DEVICE WITH LED'S CANNOT BE USED FOR THIS PURPOSE.

INFO

REINSTALL TRIM.

29



User guide



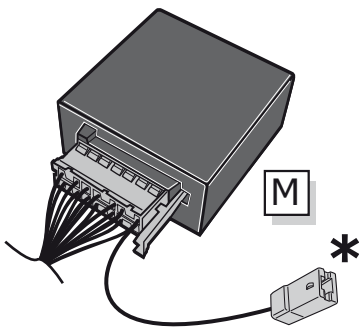
INFO

SOCKET CONNECTION

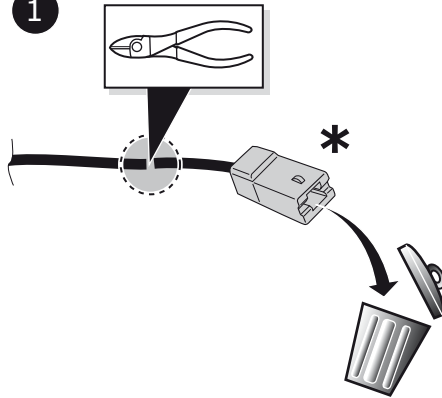
DIN/ISO 1724							
	1/L	2	3/31	4/R	5/58-R	6/54	7/58-L
Pmax	21W	21W		21W	42W	3x21W	42W
Colour	Black/ White	Blue	Brown	Black/ Green	Grey/ Red	Black/ Red	Grey/ Black

Reverse signal preparation

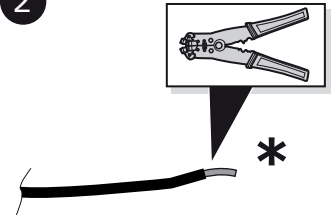
A



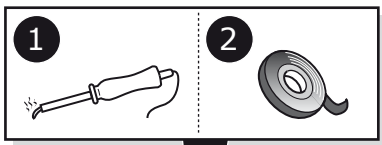
1



2



B



⚠ MAX = 21W

